

ULTRA LOW EMISSION ZONE

A LOCAL PERSPECTIVE



context

- **Putney High Street Low Emission Bus Zone (March 2017)**
- **Private motor vehicle reduction**
- **Council declares climate emergency**
- **Current initiatives**
- **Local impacts of ULEZ**



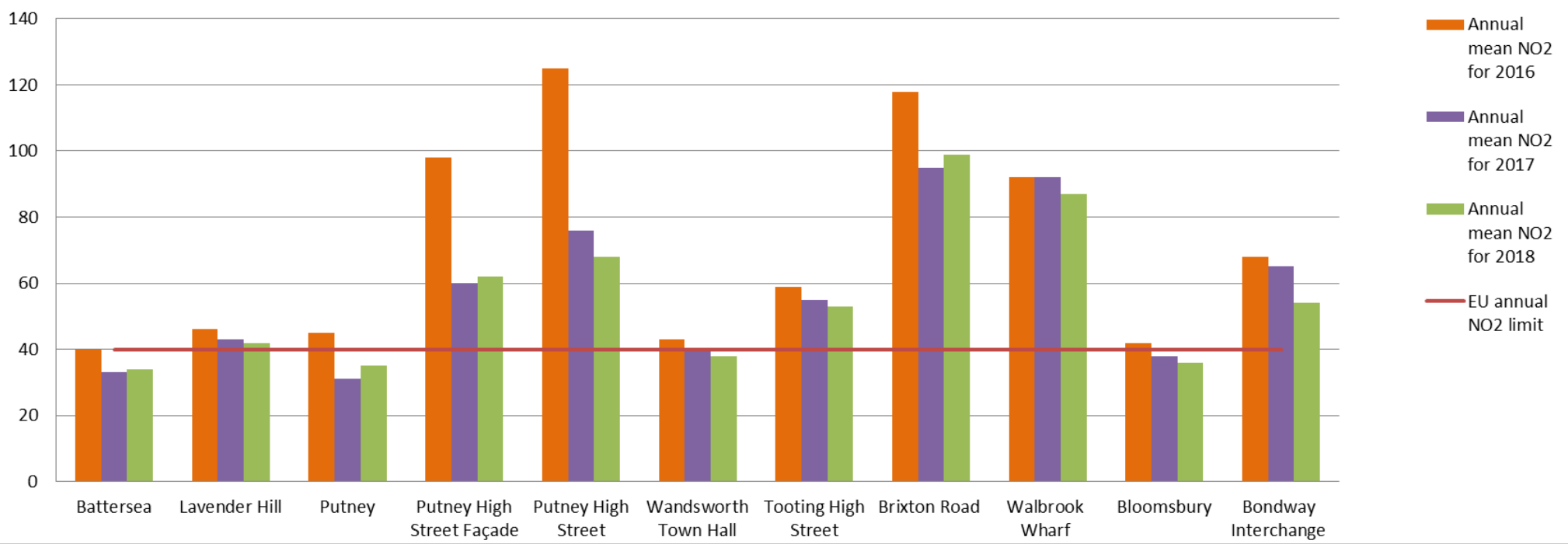
Putney High Street



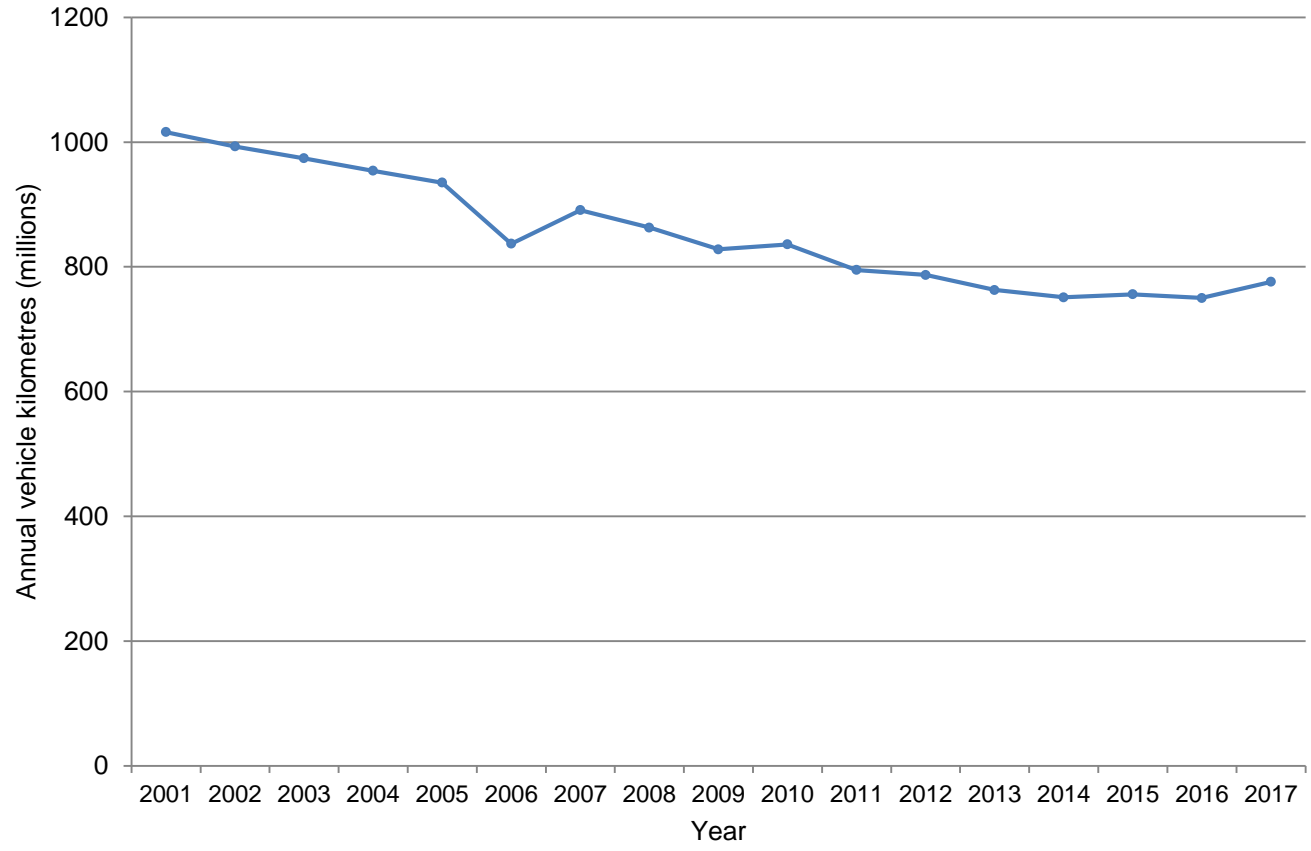
- Emissions monitoring
- Loading restrictions
- Extra enforcement
- Low emission bus zone

Improving air quality

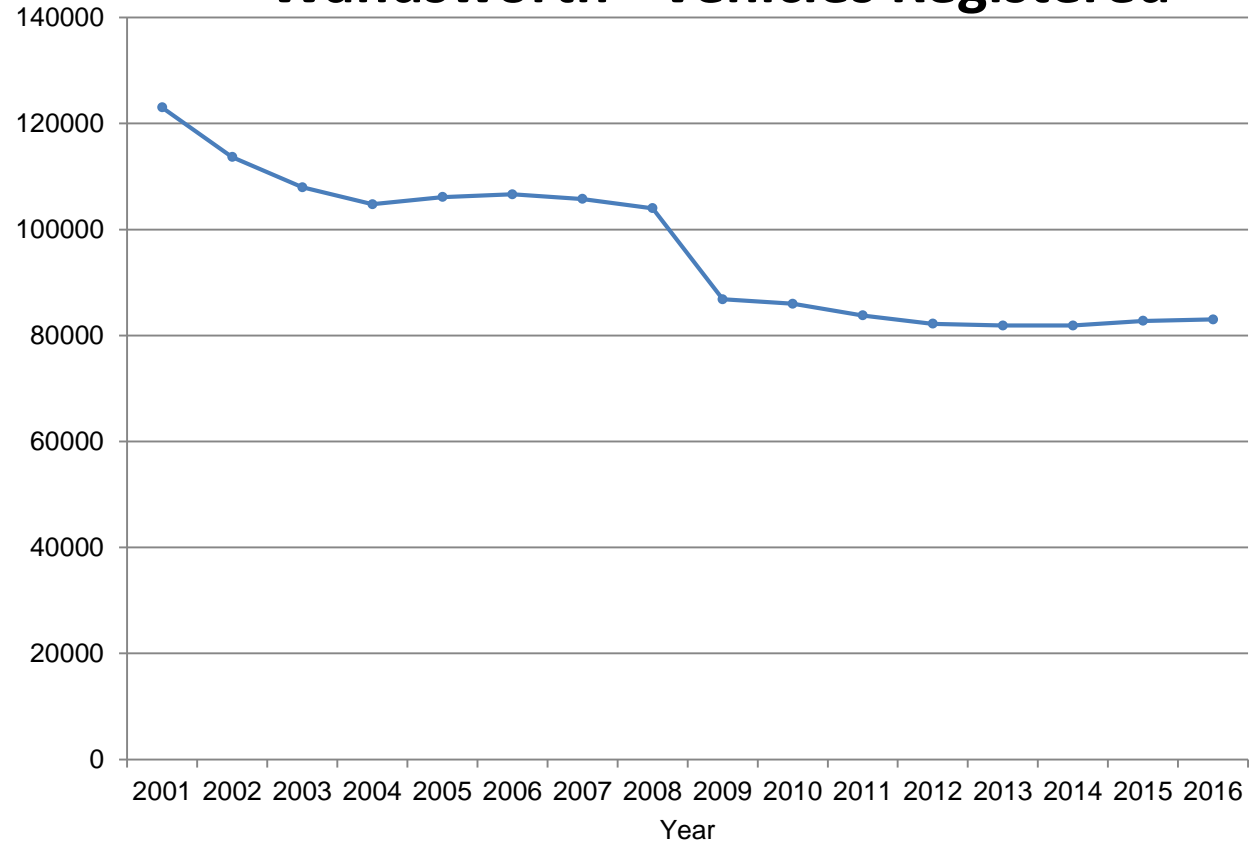
Wandsworth NO2
Annual Mean for 2016-2018 ($\mu\text{g}/\text{m}^3$)



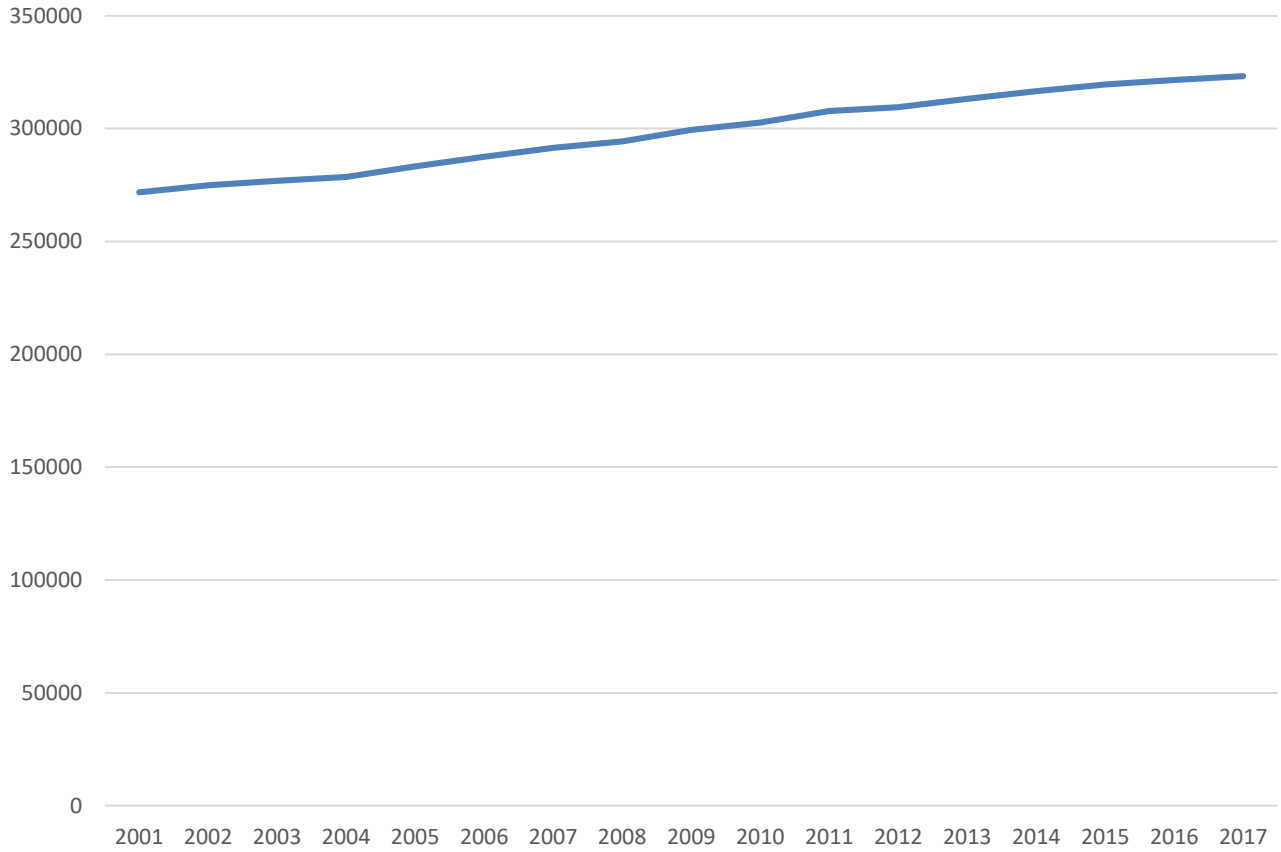
Wandsworth – Motor Traffic Volume



Wandsworth - Vehicles Registered



Wandsworth Population



Council declares climate emergency June 2019

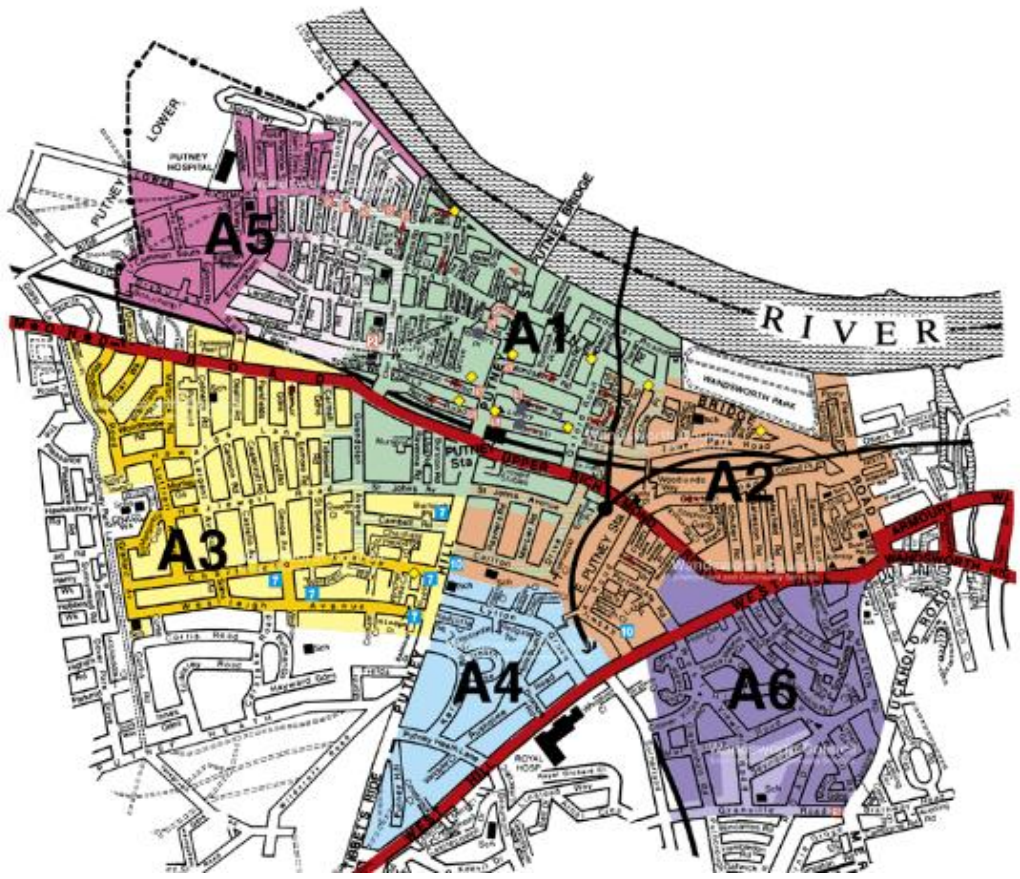
- **Carbon neutral 2030**
- **Carbon zero 2050**
- **Across all Council services**
- **Travel mode shift targets**
- **Active Travel and
Healthy Streets**
- **Car clubs and electric vehicles**



Local ULEZ issues

- **Boundary affects**
- **Cul-de-sacs and no-through routes**
- **Parking zones**
- **Signing and enforcement**
- **Hammersmith Bridge**
- **Electric vehicle charging priority (area scheme)**

Putney parking zones



Local ULEZ issues

- **Wandsworth one-way system**
- **Waste and recycling access**
- **Effect on businesses**
- **Need for information and education**
- **Don't neglect air quality elsewhere**
- **Healthy streets**

Wandsworth Borough Council

www.wandsworth.gov.uk

