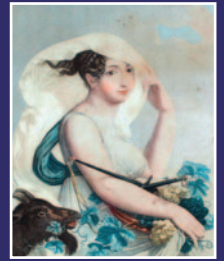




# The Bulletin

For our members in Putney and Roehampton



October 2023



**Daniel Holloway, Director of Retail at The Royal Trinity Hospice** will talk about the work they do both in the in-patient unit and more broadly across the community, the position of their

shops within local communities, how they operate and how sustainable retailing is at the forefront of their work, as well as a bit about their wonderful gardens. You'll be surprised at how involved they are with the community.

**Monday 23 October, 7.30pm, Community Church, Werter Road, SW15 2LL**



Refreshments available.  
Disabled access  
£3 donation welcome from non-members.

## Measuring pollution in Putney: our continuing citizen science work.

Because of concern over the levels of atmospheric pollution in Putney, especially in the High Street (PHS), the Society has over the past 10 years or so carried out a series of citizen science exercises to measure the level of NO<sub>2</sub>. However, these have been one-off exercises, measuring pollution for one month at a time. But now, with the generous help and support of the local Environmental Health team, we have been able to mount a series

of monthly tests, enabling us to see what levels look like in the longer term. We have just completed the first full year of these, at seven locations on or around PHS: see the table below.

The highest level was found, not surprisingly, at the northern end of PHS, where it was 62.9 and 57.6 µg/m<sup>3</sup> outside Simmons bar and the Odeon cinema respectively; in Putney Bridge Road it was almost as high at 50.7. Putney Cross and the Upper

Richmond Road were both in the mid-40s. To put the results in context, we need to bear in mind that, although agreed the statutory maximum level is 40 µg/m<sup>3</sup>, this is essentially an interim target level when the agreed WHO safe level is 10 µg/m<sup>3</sup>. Consequently, the levels we have recorded are still disturbingly high (though lower than when they were at their worst in 2016, thanks to TfL's introduction of hybrid buses).

Location	Average NO <sub>2</sub> level, July 2022-June 2023 (µg per cubic metre)
Putney High Street, outside Simmons bar	62.9
Putney High Street, outside the Odeon cinema	57.6
Putney Bridge Road, East of Burstock Road	50.7
Putney Cross, outside Kinleigh Folkard & Hayward	48.9
Upper Richmond Road, opposite Putney Hotel	45.8
Outside Chelverton Road Bus Garage	34.9
Lower Richmond Road, outside the Star & Garter	33.1

## Community Panel

Co-convenors: Victoria Diamond & Val Jones Vickysw15@aol.com & jones.val@gmail.com 07746 022654

### Health News

Following the new GP contract, which aims to improve the patient appointment system, Putneymead is one of the first Wandsworth practices to introduce Total Triage. This means patients will be triaged by a GP within two hours of contacting the practice, or by another member of the triage hub team if more appropriate.

Our local GPs have always aimed to put patients first and despite the restructuring of the local health system - with an Integrated Care Board (ICB) in charge of budgets and the decommissioning of the patient participation group network, stalwarts of the latter have continued to work behind the scenes and share information. Putneymead has held a number of patient group meetings - the last being about Total Triage, and Heathbridge held one on 19 September and have one planned on 19 October at 10am at the Coppa Club.

Putneymead is also setting up a community event for older people in November as part of Wandsworth's Brighter Living Programme. (Look out for the date on Putney Society website) The aim is to give advice on keeping active, falls prevention etc but also to build community resilience and to set up a continuing programme of events responding to community demand. So please let us know what issues you would like addressed.

**Discount Scheme** – we are delighted to have signed up 2 new businesses to the Scheme.

- Lark at 70 Lower Richmond Road is a gift, card and clothing shop with a great variety for all ages. They're offering 5% off over £50 spend, 10% off over £100, 15% over £150 and 20% off over £200. Tel 0207 998 4300.
- Blake's Heaven at 135 Lower Richmond Road, which is a more specialised gift shop of movie memorabilia. Tel 0203 091 1658

**The Animal Welfare Service (AWS)** (previously known as the Dog Control Service) comprises of 3 patrolling officers, who operate a shift system covering the borough from 7am to 9pm Monday to Friday. Out of hours there is a call out service that attends to stray dogs only. All general or routine enquiries and complaints should initially be directed to the AWS contacts below.

The manager is Mark Callis Tel: 020 8871 7132, email mark.callis@richmondandwandsworth.gov.uk

### Useful contacts:

AWS email:

[animalwelfare@richmondandwandsworth.gov.uk](mailto:animalwelfare@richmondandwandsworth.gov.uk)

AWS Tel.: 020 8871 7606. Or for urgent calls 07860 534733

Web Page: [www.wandsworth.gov.uk/dogs](http://www.wandsworth.gov.uk/dogs)

Out of hours for captive stray dogs call 020 8871 7490

## Transport Panel

convenor: Stephen Luxford. [Stephen.luxford46@gmail.com](mailto:Stephen.luxford46@gmail.com)

Air quality is very much the theme at the moment. Richard Carter at the Society has been undertaking research, in conjunction with Wandsworth Council, at seven locations in and around the High Street. His analysis covers the 12-month period before the Wandsworth Bridge closure.

While our air quality has significantly improved since the introduction of cleaner buses Richard's research indicates we still have a long way to go (see the detailed account on page 1). It is worth also noting that the Council's new tighter air quality targets would mean all seven of our sites would breach them, with the worst two on the High Street being double the new target.

In September, the Council's published their new Air Quality Action Plan, which will run to 2028, together with their response to the report of the recent Citizens Assembly on air quality. Full details can be found on the Council's website: <https://democracy.wandsworth.gov.uk/documents/s106381/Appendix%201%20%20Wandsworth%20Air%20Quality%20Action%20Plan%20202328.pdf>.

In broad terms, the Council plan to:

- adopt tighter air quality targets
- raise public awareness of the impact of poor air quality through campaigns at local schools, care homes and GP surgeries
- encourage more cycling and walking

- enable greater take up of electric vehicles through installing many more charging points
- apply higher air quality standards for new buildings and in the demolition of existing ones
- transition their own vehicle fleet to low and zero emission vehicles.

Further to my remarks in the last Bulletin about the poster that has appeared at East Putney underground station alerting passengers to a temporary fault in the Eastbound destination board which may show an incorrect destination. I thought this 'temporary' fault has been in place for possibly as long as 20 years, however Derek Purcell has written to me about the problem his daughter faced with random destination signs when she was at primary school. He says she is now 54... so don't hold your breath for a quick solution.

Finally, at the time of writing, many have been affected by the increased road congestion in and around the High Street following the closure of Wandsworth Bridge for repairs. Hopefully the situation will have eased by the time you read this. But don't count your chickens, there are plans to rework the junction between the bottom of the High Street and the Lower Richmond Road with work expected to begin in December. Have any lessons been learnt?

## Open Spaces Panel convenor: Judith Chegwidden judith.chegwidden@gmail.com 020 8788 4489

Most of you will by now have received a letter from Wimbledon and Putney Commons Conservators (WPCC) inviting all residents within the Levy paying area to respond to their consultation on increasing the Levy before 29 October. It is important that all voices are heard in this process and the Society will be formulating its response in the next few weeks. To respond online you need the unique code that came on the reply card or use the card to respond by post. If you want to learn more and ask questions, there are public meetings as follows:

- Tuesday 17 October, 7pm, Community Church, Werter Road, SW15 2LL
- Thursday 19 October, 7pm, Holy Trinity Church, Ponsonby Road, SW15 4LA
- Saturday 21 October, 5pm online. Register at [www.wpcc.org.uk/about-us](http://www.wpcc.org.uk/about-us)

In other news from WPPC, Colin Cooper (formerly CEO of Habitats and Heritage) has been appointed CEO and took up his post at the start of September. We are looking forward to meeting him.

Two members of the panel attended the London in Bloom award ceremony in Mile End Park on 21 September. In our area the following received awards:

Putney Common and Wimbledon Common won Gold again in the Commons section and the latter was overall winner in that category.



Judith Chegwidden and Catherine Lalani still slightly stunned by their grade.

Wandsworth Park and Coronation Gardens (Southfields) were awarded Silver Gilt, while both Wandsworth Common, Tooting Common and Battersea Park were graded Gold in their sections.

To our surprise and delight the Putney Tower Parklet, which is maintained by members of the Society's Open Spaces Panel (generously funded by JCDecaux), was graded Level 4 (grades run from 1-5) in the "It's Your Neighbourhood" category. Now the challenge is to improve on that next year! Thanks to all our members who have made this possible and to the children of Our Lady of Victories (the nearest primary school) the third member of our partnership.

## Buildings Panel convenor: Andrew Catto ac@andrewcatto.co.uk 020 8785 0077

Following on from the item about 5G 'phone masts last month, I'm sorry to report that we're still waiting for a response from Wandsworth Council to our request to clarify the Council's policy on providing a 5G service in the many areas of the borough where there are no tall buildings to mount the antennae. The Chairman of the Society has now followed this up with the Leader of the Council. Watch this space.

The applications keep coming for works associated with new food outlets in the town centre. The latest is for the shop front – all that needs approval since the use is out of the Council's control – for the site next door to the newly opened, but partly unauthorised Chopstix. This one includes the sensible revival of shop front awnings, which is good to see. They keep the sun off the windows on hot days, reducing the need for air conditioning and making it more comfortable to sit by the window and are a nice bonus for shoppers when it rains. New awnings have also appeared on The Railway pub. Is this one feature of Victorian shopping streets due for a wider revival?

This month I stood in for our usual representative at the Council's Conservation and Heritage Advisory Committee. No Putney cases, but plenty that involved walls. One application we didn't like – in Battersea but with relevance to Putney – sought to replace the whole of a front garden wall

with a cycle store, with doors opening on to the pavement. Not only out of keeping with the street, but a risk to sight impaired passers-by if those doors get left open, as will inevitably happen. Please don't do this at home. Also on front gardens, we wrote to oppose an application to pave a front garden in West Putney which failed to be clear about using impermeable paving.

I hope some of you followed my suggestion to visit some of the many interesting buildings that were free to visit during September's Open House. A big shout out to our own Stephen Luxford who was leading tours around the National Audit Office's home in the former BOAC terminal in Victoria, now returned to something of its 1930's glory.

The answer to last month's related question was Lancelot 'Capability' Brown. He is believed to have been responsible both for the landscape behind what is now The Royal Hospital for Neuro-disability and that in front of Mount Clare House, now Downshire Fields at the heart of the Alton West estate in Roehampton. Early photos of the estate show this as a clear vista defined by trees around the edge. I just wish the LCC and later Wandsworth Council hadn't decided it needed more trees, lots of them, so that the valley can't now be seen from Mount Clare, nor can the slab blocks marching down Clarence Lane be appreciated from Danebury Avenue as was once the case. I'm all for trees, but sometimes ...

## Autumn edition of the Wandsworth Historian celebrates 70 years of the Wandsworth Historical Society

Of interest to Putney readers are an account of archaeological activity in 1960s Putney and a review of the achievements of Aylings, the world-famous oar-makers based on Putney Embankment, as well as a celebration of the centenary of King George's Park in central Wandsworth.

The Wandsworth Historian (ISSN 1751-9225) is published by the Wandsworth Historical Society, and copies are available price £3.00 plus £2.00 for postage and packing from WHS, 119 Heythorp Street, London SW18 5BT or by emailing 020neil119@gmail.com.



Lucy Pocock, a pioneer in women's rowing, watched by a large crowd as she passes Aylings' workshop in Putney in August 1912. (River and Rowing Museum, Henley)

## Dates for your Diary



**9 October at 8pm** - Find out more about forensic botany at Arts Society South West Lecture at the Dryburgh Hall. Lecturer Mark Spencer will explain that plants can be silent witnesses; their presence at a crime scene can help to identify a suspect or locate a victim. Visitors welcome.

**Music at St Margaret's Church, Putney Park Lane**  
(Free but donation appreciated)

**Saturday 7 Oct., 7pm:** Grand Piano Celebration

**Sunday 15 Oct., 6pm:** Aleksii Koponen & Maya Soltan, Baritone and Piano

**Sunday 22 Oct., 6pm:** Madeleine Holmes & Gavin Roberts, Soprano & Piano

**Sunday 29 Oct., 6pm:** Simone Alessandro Tavoni, Piano

## Letters to the Editor



Dear Editor,

When it was learned, in 2017, that the Railway pub was to become a 'Revolution', the PutneySW15 website and I started a campaign to try to ensure that the pub's many photographs of Old Putney and 'potted histories', e.g., of the Putney Debates and of Clement Attlee, were retained. Happily, they were, though sadly, the lovely Art Deco-style stained-glass window halfway up the back staircase was lost – apparently later sold on an auction website for £1,500.

Unfortunately, no such campaign was undertaken during the closure preceding the pub's reversion to its old name, under new owners Urban Pubs & Bars, and all the photographs have gone, replaced by pleasant enough, but irrelevant, pictures. I partly blame myself.

I've been in touch with both Revolution and Urban Pubs & Bars but am stuck in a game of ping-pong, with each claiming the other has them, and I'm not confident the material can be recovered. Nicola Grant (Positively Putney) has also taken up the cudgel. Putney ought to have a 'heritage champion', to keep an eye on such issues. I'm not volunteering! I'm too old!

Sincerely,

*Phil Evison*

Dear Editor,

I'm responding to your request in the latest bulletin, for members' views on light pollution along the river in Putney.

The strip lighting that has been installed on the side of Putney Bridge is hideous (it looks like row upon row of fluorescent tubes). Quite apart from the damage to the insect population, it is an eyesore for the human population. Contrary to Wandsworth Council's statement in 2019 that the lights would "...illuminate the historic Grade II listed bridge, so it can be seen in all its glory during the hours of darkness", the lights on the side obscure the elegant lines of the bridge arches, and also the beautiful historic lamps on the bridge.

Yours sincerely

*Sue Jones*

## FUTURE PANEL MEETINGS

New panel members very welcome. Some panel meetings are held in person and some on Zoom. Please check details below. If you are new to panel meetings, please contact the panel convenor by email if you want to take part in the Zoom meeting and they will send out an invitation.

### COMMUNITY

**12 Oct., 9 Nov. (18.30)**

in person but contact convenors for confirmation

Co-convenors:

**Vicky Diamond & Val Jones**

vickysw15@aol.co.uk,  
jones.val@gmail.com  
T: 07746 022654 (Vicky)  
T: 07780 674114 (Val)

### TRANSPORT

**10 Oct., 14 Nov. (19.30)**

by Zoom

Convenor:

**Stephen Luxford**

Stephen.luxford46@gmail.com

### BUILDINGS

**4 Oct., 1 Nov.**

by Zoom (18.30)

Convenor:

**Andrew Catto**

ac@andrewcatto.co.uk  
T: 07831 761327

### OPEN SPACES

**5 Oct., 2 Nov. (18.30)**

in person at 28 Howards Lane

Convenor:

**Judith Chegwidzen**

judith.chegwidzen@gmail.com  
T: 020 8788 4489

## PUTNEY SOCIETY CONTACTS

See website for full details:  
[www.putneysociety.org.uk](http://www.putneysociety.org.uk)

**Chair: Robert Arguille**  
020 8788 4554 [chair@putneysociety.org.uk](mailto:chair@putneysociety.org.uk)

**Secretary: Post Vacant**

**Website Editor: Robert Arguille**  
[webeditor@putneysociety.org.uk](mailto:webeditor@putneysociety.org.uk)

**Bulletin Editor: Judith Chegwidzen**

020 8788 4489 [judith.chegwidzen@gmail.com](mailto:judith.chegwidzen@gmail.com)

**Membership: Chris Orriss**

020 8785 7115 [membership@putneysociety.org.uk](mailto:membership@putneysociety.org.uk)  
22 Pentlow Street, London SW15 1LX

**Treasurer: Andrew Nichol**

07894 982 020 [nicol.andrewjd@gmail.com](mailto:nicol.andrewjd@gmail.com)