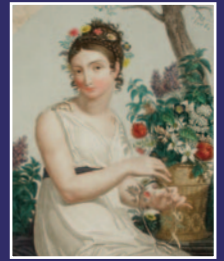




The Bulletin

For our members in Putney and Roehampton



May 2023

Increasing biodiversity in the gardens of Fulham Palace – including planting for drought conditions

Speaker: Lucy Hart, Head Gardener at Fulham Palace

Monday 22 May 7.30pm, Community Church, Werter Road, SW15 2LL

Fulham Palace and Gardens are a heritage site and the Trustees recognise the impact of action (and inaction) on a site that is centuries old. In May of 2021, they launched a biodiversity and climate change resilience policy. Lucy Hart will report on efforts to reduce their own environmental and pollution footprint, increasing biodiversity and inspiring others to do the same.

There will also be a chance to find out more about the Putney Society's **Front Garden Award Scheme** and our own drive to improve biodiversity.



Please note that this meeting will also be live streamed: to join online please contact registration@putneysociety.org.uk

New faces, departures and some situations vacant

A warm welcome to our new President, **Revd. Brutus Green**, Vicar of St Margaret's Putney Park Lane and many thanks to our outgoing president Angela Holman, who has served the Society in many roles over the last twenty years. Thanks to two retiring members of the Executive Committee, **Charles Gillbe** and **Val Jones** – although Charles will continue to support the Open Spaces Panel as Deputy Convenor and Val continues as Joint Convenor of the Community Panel. We are incredibly indebted to **Carolyn McMillan** who has served for many years as both Chair and Secretary of the Society but is now stepping back from the role of Secretary. We are lucky that she is continuing to serve on the Executive Committee. Finally, we are pleased to welcome three new members to that Committee, **Jane Carter**, **Michael Ixer** and **Lee Roberts**.

VACANCIES

Secretary: Prime responsibility is seeing that the Society operates in accordance with its Constitution, good charitable practice and its own Standing Orders. Writes draft agendas for the Executive Committee (EC) and the Admin Sub-Committee (ASC) meetings. Arranges meeting rooms when necessary. Takes minutes of ASC, EC & AGM. Perhaps suitable for a job share?

Social Secretary: Organises at least one social, face-to-face event per annum with possible additional scope to organise some local visits and walks.

If you are interested in either role please contact the Chair (chair@putneysociety.org.uk)



You are invited!

Spend the last day of the long Coronation weekend, Monday 8th May celebrating in Putney town centre. Positively Putney BID is bringing together residents, visitors, businesses, and local voluntary groups to shop, eat, stay, play and enjoy all that Putney has to offer to offer.

**MONDAY 8 MAY
CHURCH SQUARE 12-4PM**

- Kings and Queens Fancy Dress parade – come dressed in your best attire and join the parade. Will congregate in Church Square at 3pm

- Arts and Crafts – suitably regal from midday to 3pm
- Return of the very popular Balloon Modeller from 12.30 to 4pm
- Circus activities in Church Square from 2pm to 4pm

The Big Help Out Putney Volunteer Village – Local Charities including the Putney Society and the Tidy Towpath Group, will be looking for support – and new members!



Community Panel

Co-convenors: Victoria Diamond & Val Jones Vickysw15@aol.com & jones.val@gmail.com 07746 022654

The date of the next meeting has been changed to the 18 May, 6.30pm by Zoom. Anyone wishing to join us, please contact Val or Vicky.

On 17 May, our MP, Fleur Anderson, held a meeting on Car Theft & Crime led by Met Police Inspector Jonathan Lloyd, which was very interesting. Over the past six months, Thamesfield Ward had the highest rate of theft of motor vehicles and theft from motor vehicles in the Borough, with West Putney second. Theft from vehicles is an opportunistic crime, with absolutely anything left in view a target, no matter how insignificant you think it might be. The latest crime is the smashing in of back windows – particularly aimed at cars where the parcel shelf is up, and the criminals just want to see if there's anything hidden under the shelf. Ideally leave the parcel shelf up (or down, however it works in your vehicle), with a clear view of the empty boot. People still leave laptops, phones and bags on display. **DON'T LEAVE ANYTHING IN YOUR VEHICLE!**

Theft of motor vehicles has increased and is mostly an organised crime. High end vehicles such as Jaguars, BMW's, Range Rovers and Mercedes are the main targets.

It takes criminals 10-15 seconds to smash a car window and grab items. It takes 1 minute to steal a catalytic converter. Police are going to have catalytic converter marker sessions in May – look out for publicity about those.

If your car is stolen, the thieves quite often park it a few streets away to start with, to see if there's a tracker on it, and

if the owner or police get to it quickly. After that it is probably going to be stripped for parts, or shipped abroad. Number plates are quickly swapped. You can apparently get special screws from garages which make it very difficult to remove your number plate.

Police have run campaigns where they go down streets testing car doors to see how many have been left unlocked. The last one they did they found 23 unlocked vehicles in 2 hours!

If you have a keyless entry system, then you may need a Faraday bag, pouch or box which block electromagnetic fields. Faraday pouches should be used, even when you're shopping. Don't just put your key in your pocket or handbag. Thieves are known to wave a gadget around in a car park, and collect data, enabling them to steal vehicles easily. At home don't leave the key near the front door. Put them in Faraday pouches out of sight.

Gear locks and steering wheel locks ARE a deterrent. S5 deadlocks are recommended (rather expensive!). Air tags are also useful for tracking vehicles.

Motor bikes or mopeds – use a bike cover - and lock the rear wheel onto an immovable object. Steering locks on bikes are easily overcome.

REPORT ALL CRIMES AND SUSPICIOUS ACTIVITY. You never know what little titbit of information will be helpful in catching a criminal and it's helpful for police to know patterns of activity they otherwise wouldn't be aware of.

Transport Panel

convenor: Stephen Luxford. Stephen.luxford46@gmail.com

Earlier this year the Council set up a Citizen's Assembly on air quality to discuss local air quality problems and possible solutions. The Assembly has now met three times. They have heard from experts on topics including air pollution, the impacts on health, the local picture and personal perspectives. There has been a wide variety of voices heard. These include Council officials discussing their Air Quality Action Plan; local groups such as Mums for Lungs and Wandsworth Living Streets; academics; and, amongst others, local school children. In addition, there has been a public webinar to canvass other views. Supplementing this there was a recent Council air quality survey which elicited several thousand responses. The findings from this survey will be reviewed by the Assembly as well as the Council's Air Quality team to help shape final recommendations and actions. Videos of the Assembly sessions and webinar and other information can be found at

<https://www.wandsworth.gov.uk/news/campaigns/climate-change/wandsworth-air-quality-citizens-assembly/>

Hammersmith Bridge has now been closed to vehicle traffic for four years. It is hoped that, by the time you read this, planning applications for the temporary bridge to facilitate repair work for the Bridge will have been submitted. The plans will need to be approved both by Hammersmith & Fulham and Richmond Councils. If planning permission is granted, a procurement exercise will follow with a view to having a contractor in place to begin work on a temporary



bridge next year. The temporary bridge, which would allow cars, emergency vehicles and buses over (one bus on the bridge at a time) might be open in 2026. Timing of when the full Bridge repair will be completed has yet to be confirmed but could be late 2020s and most probably at a higher cost than current estimates (around £140M which predates Ukraine and high inflation). Read more about the proposals here <https://www.lbhf.gov.uk/transport-and-roads/hammersmith-bridge>

The Council have approved the Uber Boats plan for a new pier (see below for architect's image) and turned down the alternative one from the current Pier operator, Livett's. Subject to any appeal on the planning application approval, a final decision will be made by the Port of London Authority. Uber's proposals include making boat services more accessible for disabled users.

Open Spaces Panel **convenor:** Judith Chegwidden judith.chegwidden@gmail.com 020 8788 4489

At our Panel meeting in early April, we were very pleased to meet up with Neil Blackley, Head of Parks for Enable, the not-for-profit organisation that provides leisure and cultural services and manages parks and green spaces on behalf of Wandsworth Council. It is responsible for all the trees planted in our streets, housing estates and parks (about 60,000!). Neil explained that the contracts for tree planting and maintenance are let by the Council but supervised by Enable. Each year Enable oversees the planting of around 700 trees with locations based on a survey carried out about two years ago which identified all potential sites for tree planting in the Borough. Tree officers inspect all the trees under the aegis of Enable on a two-year cycle – of particular concern at the moment are some London Plane trees that are showing signs of a fungal disease called *Massaria*, which causes large lesions and can cause branches to break off the tree and fall.

Over the last few years, the types of trees selected for planting have changed as some, such as rowan and whitebeam, are less robust in our changing climate. Newly planted trees are likely to include silver birch, Catalpa, maidenhair tree and ornamental pear. The tree planting and initial maintenance contract is coming up for renewal in 2025 and in the run-up to the production of tender documents by Wandsworth Council we will be campaigning to include a provision to increase the time for watering new trees from one year to two years as recommended by many arboriculturists - and the company from whom the Council buys its trees.

The next few weeks will be busy ones for panel members as we are in the run up to our **Front Garden Award Scheme**

which will focus on the streets of central Putney. In May we will be offering free plants and gardening advice as follows:

- **Saturday 13 May from 10am-1pm in Disraeli Road, outside the Library**
- **Saturday 20 May from 10am-1pm at the corner of Chelverton Road and Charlwood Road**

Judging will take place from 10-20 June.

The planting at the JCDecaux parklet at the corner of Charlwood Road and Upper Richmond Road is being enhanced thanks to the efforts of panel members and the financial support of JCDecaux – starting with 90 *Liatris spicata* corms and continuing with further planting over the next few weeks. Look out for the colourful spikes of *Liatris* in mid to late summer.



Buildings Panel **convenor:** Andrew Catto ac@andrewcatto.co.uk 020 8785 0077

Last month I commented on the wide range of topics the Panel meetings cover. April was no exception. We debated and commented on changes to the emerging (and now a year late) new Local Plan, on revisions to a Conservation Area Appraisal document and on the Council's totally confusing Flood Strategy as well as objecting to two planning applications.

For both applications, our comments could be summed up as 'try harder, Wandsworth'. The first was an apparently minor application for replacement French doors on a listed building. What is proposed may well be suitable, but the application had nothing to show what exists, how many doors are affected or where they are. Wandsworth, like all planning authorities, publish a list of what documents should accompany a planning application, yet validated this one despite nearly all of these being missing here.

Of wider interest the second application was for the Council's own plans to relandscape and reopen Waterman's Green, the sliver of open land immediately to the west of Putney Bridge, using hard won Government funding aimed to improve the High Street. 'Unimaginative' is the polite summary. Meanwhile, actually on the High Street, we also wrote to the Planning Inspector supporting plans for a public defibrillator opposite Putney Station which the council had refused.

A similar letter of support was sent to the Inspector for a public defibrillator near East Putney Station.

Next, along with the Community Panel, we, and I hope you too dear reader, will be looking at Wandsworth's draft Night Time Strategy. Go to <https://ntswandsworth.commonplace.is/en-GB/proposals/all-recommendations/step1> to add your thoughts on this. Ironically the front cover of the consultation document shows the most iconic empty building on the High Street, the listed White Lion, opposite St Mary's which has now been empty for almost a decade. The Council have powers to demand action or compulsory purchase, but rarely use this. Should we ask them to do so?

As the Buildings Panel we are keen not just to protect, but to celebrate the many interesting buildings found in all corners of SW15. For our public meetings last June, I enjoyed leading members around our varied and historic riverside. Since we have the midsummer slot again, this year we will be walking Roehampton. Make a date for both the 24th and 25th June and you will see all three of SW15's Grade One listed buildings as well our oldest secular building and two iconic 20th century estates. Both walks start at 2pm from Roehampton Village, and finish where you can get a bus home.

WANDSWORTH HERITAGE FESTIVAL 2023

20 May - 11 June - EDUCATING WANDSWORTH – many of the events this year focus on education in Wandsworth past and present. In our area you can choose between a range of walks and lectures. For a full list of events go to www.better.org.uk/wandsworth-heritage-service

Exhibition: Wandsworth Borough Collection

Organised by the University of Roehampton and available throughout the festival – discover treasures from a collection of 14,000 historical objects at the University Library, Roehampton Lane, SW15 5SZ

Tour: Treasures of Whitelands College, Monday 22 May 2pm.

Enjoy a tour of the historic college, which boasts stunning art and artefacts by artists including Edward Burne-Jones and John Ruskin. Meet at reception of Whitelands College, Holybourne Avenue, SW15 4JD, **Booking essential** – contact gilly.king@roehampton.ac.uk

Tour: Historic Froebel College, Thursday 25th May, 2pm.

Enjoy a tour followed by a visit to the archives of Froebel College. The Froebel Archive houses fascinating records documenting the college history and kindergarten movement in Britain since the 1870s. Meet at the entrance to Grove House, University of Roehampton, Roehampton Lane, SW15 5PJ.

Booking essential – contact gilly.king@roehampton.ac.uk

Walk: The Lost Museums of Wandsworth, Friday 26th May, 2pm

Organised by the Wandsworth Museum Action Group Wandsworth Museum started life in Putney Library, moved to the Old Court House in Garratt Lane and then to West Hill Library where it closed in 2015. On this walk, we will visit the sites linked to Wandsworth Museum and hear about the rise and fall of the Lost Museums of Wandsworth. Meet outside Putney Library, 5-7 Disraeli Road, SW15 2DR

MARINA ABRAMOVIĆ



THE ARTS
SOCIETY
SOUTH WEST
LONDON

In 2023, the RA is hosting the first ever UK exhibition on Marina Abramovic' and the artist is likely to become a hotly debated topic. Abramovic' is a pioneer of performance art and the lecture will look at her 50-year career from its dramatic beginnings to how the artist, now in her 70's, has developed her work to reflect her changing perceptions of the world. The lecture will consider whether performance art can outlive the performance itself; are the photos, videos and re-performances of younger artists just as valid?

Lecturer: Helen Oakden

8 MAY by Zoom at 8.00pm The lecture will be only Zoom this month because Dryburgh Hall is closed for the Coronation Bank Holiday. It will be recorded so that it can be viewed on a different day.

Please check our website for details of how to register for the Zoom Lecture. Visitors welcome <https://www.theartssocietyswlondon.org.uk>

Concerts at St Margaret's Putney Park Lane



SUNDAY EVENING CONCERTS

There is no charge to attend and no need to book a seat. Drinks will be served in the garden - weather permitting - **from 5:30pm.**

- 7 May** - Emilia Noack-Wilkinson & Shana Moron-Caravel, mezzo soprano & piano
- 14 May** - Amici della Voce, vocal ensemble
- 21 May** - Natalie Tsaldarakis & Panayotis Archontides, piano duo
- 28 May** - Freddy & Hugo Wickham, voice & piano

FUTURE PANEL MEETINGS

New panel members very welcome. Some panel meetings are now being held in person. Please check details below. If you are new to panel meetings, please contact the panel convener by email if you want to take part in the Zoom meeting and they will send out an invitation.

COMMUNITY

**18 May (note change),
8 June by Zoom (18.30)**

**Co-convenors:
Vicky Diamond & Val Jones**

vickysw15@aol.co.uk,
jones.val@gmail.com
T: 07746 022654 (Vicky)
T: 07780 674114 (Val)

TRANSPORT

**9 May, 13 June
by Zoom (19.30)**

**Convenor:
Stephen Luxford**

Stephen.luxford46@gmail.com

BUILDINGS

**3 May, 7 June
by Zoom (18.30)**

**Convenor:
Andrew Catto**

ac@andrewcatto.co.uk
T: 07831 761327

OPEN SPACES

**4 May in-person at
28 Howards Lane,
1 June by Zoom (18.30)**

**Convenor:
Judith Chegwidden**

judith.chegwidden@gmail.com
T: 020 8788 4489

PUTNEY SOCIETY CONTACTS

See website for full details:
www.putneysociety.org.uk

Chair: Robert Arguille
020 8788 4554 chair@putneysociety.org.uk

Secretary: Post Vacant

Website Editor: Robert Arguille
webeditor@putneysociety.org.uk

Bulletin Editor: Judith Chegwidden

020 8788 4489 judith.chegwidden@gmail.com

Membership: Chris Orriss
020 8785 7115 membership@putneysociety.org.uk
22 Pentlow Street, London SW15 1LX

Treasurer: Andrew Nichol
07894 982 020 nicol.andrewjd@gmail.com