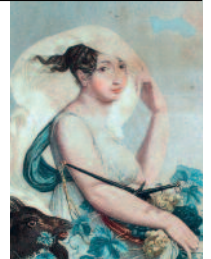




The Bulletin

October 2017



Our members are our strength – help us to keep it that way

This is special issue of the Bulletin where we are asking all our members to help us ensure that the Society continues to be a strong voice in Putney and Roehampton.

We want to keep working to promote:

- high standards of planning and architecture and good future development
- the preservation and improvement of public amenities (e.g. buildings, open spaces, transport, clean air and community services)
- the concept of active citizenship

We have enclosed a membership form with every hard copy of the Bulletin - and those of you receiving your Bulletin by email will find a membership form attached – we are asking you to take time in October to talk to your friends and neighbours and encourage them to join the Society.

You may be asked what we do for our members – you could mention:

- our discount scheme in local small or

independent shops;

- monthly bulletin full of local issues and an informative website
- four panels which monitor, respond and act on local civic issues (Buildings, Transport, Open Spaces, Community). Their monthly meetings are open to all members;
- public meetings on local or London-wide matters
- social events and trips to places of interest

Our target is to reach 1,500 households by the end of the year – if each existing member recruited just one new member we could pass this target with ease. Will you help?



JIM MADDAN

It is with sadness that we report that Cllr Jim Maddan passed away on 13th September. Jim had represented Thamesfield Ward since 2002 and for 30 years prior to that served as a police officer, rising to the rank of Inspector. He spent several years in charge of day-to-day policing in Putney and Roehampton. At the time of his death he was serving as Mayor of Wandsworth for the second time. He was well known to many of our members and was a familiar sight in and around Putney. His undoubted commitment and enthusiasm for our community was recognised by all and will be greatly missed. Our thoughts are with his family.

Putney Remembers the Men of the First World War

By Maggie Jones, Sue Rolfe, Michael Bull

Published by the Wandsworth Historical Society and the Putney Society

340 men who died during the First World War are listed on the Roll of Honour in St Mary's Church, Putney.

This book, based on an original blog by Maggie Jones, provides information about each of those who died, including, where possible, where they lived in Putney, their families, their regiment and

battalion and their place of death and burial. It links the soldiers who died in battles such as the Somme to families in Putney and to houses which in most cases can still be seen today. Many departed, never to return, for the confines of the trenches, from little houses in cramped streets, some long demolished, but identified in the

text and shown on Ordnance Survey maps. A list of the 100 or so war cemeteries pinpoints where the Putney dead are buried throughout the world. Maps, details and photographs of other local war memorials are also included.

Putney Remembers the Men of the First World War is available from Putney Pantry, St Mary's Church. Price £5

Meet the Authors 6.30pm-7.30pm Monday November 6, Putney library, Disraeli Rd, SW15 2DR

Contact: Sue Rolfe 07960 097 370 rolfe.sue3@gmail.com

Air pollution – we give a cautious welcome to reports that the level of NO2 exceedances in the High Street may have fallen following the introduction of cleaner buses earlier this year. The air monitoring machine in the High Street has broken down on three separate occasions already this year so it will be important to await the ratified results from Kings College London in due course.

Trains – FirstGroup have now taken over our local rail service. We are still hoping to arrange a Members Meeting with them to hear more about their plans, so once we have their agreement we will confirm a date.

Transport Panel

Convenor:
Stephen Luxford
stephen.luxford@
nao.gsi.gov.uk

Buses – regular readers will be aware of the tardiness with which TfL firstly struggled to replace the bus shelters outside the station despite repeated requests from the Society and then, when they finally installed them in May, did not equip them with Countdown indicators. After yet more prompting a Countdown indicator finally appeared on one of the shelters in September. We will continue to lobby so that the many passengers of the 14, 85 and 93 can once again know when their next service will arrive.

Everybody likes to feel that their opinions matter, and that they have been consulted on decisions that matter, and when it comes to public policy affecting Putney the Society is no exception. But sometimes I want to say ‘slow down’. Last year London elected a new Mayor. As a result we now have a stream of consultation documents on new policies which are keeping all panels, not just us, busy. Somehow the officials writing these all seem to send them out together, just before they go on holiday.

The new **Mayor Sadiq Khan** has shown he is getting tougher on developers who want to avoid including ‘affordable’ housing in their schemes, including by writing to Wandsworth some months ago (quite possibly as a result of a request from us) to say that the scheme for the ‘Levellers’ site at the bottom of Putney High Street was unacceptable as it stood. Those developers have recently come back with some revisions, perhaps not as much as we had hoped, which we now need to study and respond to. Watch this space. Meanwhile few can have failed to notice the splendid, if all too short lived, sense of space opposite the Exchange following the demolition of the old Top Shop / BHS. The replacement will be as high as the traditional buildings either side.

We have also spent time objecting to the growing trend for applications seeking to squeeze tiny homes in tinier plots. Recently this included plans to subdivide a family house on the Dover House Estate (withdrawn) and for two 3 storey one bedroom houses behind a shop on the Lower Richmond Road.

Buildings Panel

Convenor:
Andrew Catto
ac@andrewcatto.co.uk

020 8785 0077

Other fun for the panel this month has including pointing out wrong descriptions on two applications involving new so called ‘phone boxes’ (has anyone ever made a call from the billboard outside Lloyds Bank?) which if not corrected could lead to more clutter on our busier pavements, and reporting a freshly painted roof in a Conservation Area to the enforcement team. We have provided feedback to the Council for their biennial Design Awards (there might still be time after you read this for a late suggestion), and provided background on two potential Civic Trust Award winners. Curiously we didn’t like either scheme at planning stage. **Do join us at our panel meeting on 4th October to see what we have coming up.**

FUTURE PANEL MEETINGS

All members welcome
www.putneysociety.org.uk

COMMUNITY:
10 October (17.30),
9 November (18.30)
41 Norroy Road, SW15 1PF
Convenor:
Vicky Diamond
vickysw15@aol.com
T:07746 022654

TRANSPORT:
10 October, 14 November
At 46 Disraeli Road,
SW15 2DS (19.30)
Convenor:
Stephen Luxford
stephen.luxford@
nao.gsi.gov.uk

BUILDINGS:
4 October, 1 November
At 154 Putney High Street,
SW15 1RS (19.00)
Convenor:
Andrew Catto
ac@andrewcatto.co.uk

OPEN SPACES:
5 October, 6 November
At 71 Norroy Road,
SW15 1PH (19.00)
Convenor: John Horrocks
John.horrocks10@
btinternet.com
T: 020 8789 2956

A new Tree Strategy for the borough?

Our borough council has an adopted Tree Strategy which sets out all the council's policies in respect of trees. It is part of the Borough Plan, which seeks to guide our borough's development over the next few decades. The existing strategy was adopted in 2001 - so, it is now rather dated and less than adequate. It needs to be reviewed and brought up-to-date.

This is why the **Wandsworth Tree Wardens Network**, a group of borough residents with a special interest in and enthusiasm for all matters concerning trees, has produced a discussion paper - 'A 21st Century Tree Strategy for Wandsworth'.

The paper sets out the benefits of trees (including their ability to absorb air pollution) and explains why the council's Tree Strategy needs to be reassessed and updated. The paper is thoroughly researched and explains how a new, bolder and visionary strategy should be developed by the council. It urges the council to consider a long-term commitment to increasing the borough's tree canopy with a view to creating an 'urban forest' - a concept originally promoted and championed by the Urban Forestry and Woodland Advisory Committee.

The discussion paper has been sent to every member of the council. It has been welcomed by the Leader, Councillor Ravi Govindia. To read the paper and to find out more about the Wandsworth Tree Wardens Network look at the Tree Wardens website: <https://wandsworthtreewardens.org/about-us/>

For the Putney Society, our Open Spaces Panel is preparing a response to the WTWN's paper. Do, please, let the Panel know your views. If you have a real interest in trees, come to the next **Tree Wardens meeting on Thursday 7 December at 6.30pm** in Room 145 at the Town Hall (enter through the fountain courtyard).

Open Spaces Panel

Convenor:

John Horrocks
020 8789 2956

john.horrocks10@btinternet.com

'Playing Out Scheme': One street in Putney, Norroy Road, has had 9 street parties to date, and it was noted how much the children enjoyed playing in the street, riding their bikes, meeting other children, and their parents were pleased to meet each other too, many for the first time. Different schools and timetables means that not all children have contact with each other. The suggestion was made for residents to investigate the 'Playing Out' scheme. Playing out is where the street is closed for a couple of hours once a month, or however frequently the residents of the street agree, usually on a weekend afternoon, thus enabling the children of that street to meet and play, increasing the community spirit. There are many such schemes throughout England, but none in Wandsworth as yet. There is some legwork involved for the organisers, as all residents have to be canvassed, and if the majority agree, the outcome is

apparently well worth it. Initial enquiries in Norroy Road showed that there was a majority of enthusiastic residents, with a small minority being against or neutral. A full canvassing of residents has to take place before it can go forward. Other residents may be interested and it's worth reading about it on <http://playingout.net/>

We are delighted to see that **Glug**, on the Upper Richmond Road, won **Best Wine retailer** in the **Time and Leisure Food and Drink Awards**. Glug is one of the participants in our **Discount Scheme**. Well done Glug! A reminder to use your Discount Card, or even if you decide not to use it in a participating business, do mention it.

Community Panel

Convenor:

Victoria Diamond
07746 022654
vickysw15@aol.com

PUTNEY SOCIETY CONTACTS

See website for full details:
www.putneysociety.org.uk

Chair: Judith Chegwidden, 020 8788 4489
judith.chegwidden@gmail.com
Secretary: Carolyn McMillan
38 Disraeli Road, SW15 2DS 020 8789 6692
secretary@putneysociety.org.uk
Website Editor: Robert Arguile
webeditor@putneysociety.org.uk

Bulletin Editor: Post Vacant
Membership: Chris Orriss, 020 8785 7115
22 Pentlow Street, London SW15 1LX
membership@putneysociety.org.uk
Treasurer: Gosia Jakubik, 07746409703
gosia.jakubik@hotmail.com

Dates for your Diary

Past Present Future: what do we want from our High Street?

7.30pm on Monday 27th November 2017 at the Community Church, Werter Road, London SW15 2LL

Putney Society's November meeting will examine that backbone for the community, Putney High Street, its history, the current challenges and what plans are in hand. An open discussion will give the audience the chance to put forward their own ideas for improvement. All are welcome to come along and find out more (*free to members, £3 donation for non-members*).

There will be a **Putney Society litterpick at 10:30 on Sunday, 19 November** up Putney Park Lane. Please meet at the Upper Richmond Road end of the lane. Litter sticks, gloves and bin bags will be provided.

DIGITAL SKILLS

We have had over 70 responses so are busy analysing the responses to the questionnaire and liaising with our technology consultant on the best way to design the seminars. We will be back in touch with you all individually within the next 2-3 weeks.

LOCAL EVENTS

If you have an event you would like us to list please contact: chair@putneysociety.org.uk

Putney Artists' Open House

Part of a Wandsworth borough-wide event Artists' Open House is an annual show giving art lovers the opportunity to visit Putney Artists in their homes, studios, workshops, sheds and gardens and buy directly from them. It is the major annual cultural event in SW15. Entry is free. This year there are 50 artists showing and selling their work in 30 different locations round Putney and Roehampton.



This year's dates are the weekends of 7/8 and 14/15 October 2017 - 11am to 6pm.

The organisers have printed trail maps showing the location of each Open House round Putney and Roehampton. You can pick them up from one of the famous five Purple Bikes dotted round SW15 or from the following authorised distributors: Putney School of Art and Design, Putney Library, Roehampton Library, Jackson's Art Supplies, Zinc White Framing, Tried and True Cafe.

For more information go to putneyartists.org/openhouse.html or wandsworthart.com

Keep fit with scrub bashing!

Building on from the success of 2016, Saturday morning volunteering sessions on Wimbledon Common will continue throughout 2017. If you would like to become involved with the Saturday morning volunteer group, they meet at the bicycle racks near the Windmill car park at 10:30am and work finishes at around 12:30pm.

Saturday volunteering sessions will take place on the following dates: 14 Oct., 28 Oct., 4 Nov., 18 Nov., 2 Dec. & 16 Dec.

The maximum number of people that can be accommodated during each session is 15 – so please email peter@wpcc.org.uk to book a place by the Wednesday morning of the week preceding each session.

Wandsworth Grant Fund

This scheme provides small grants for community and voluntary sector projects including arts and culture, environment, children and young people, civic engagement, and health and wellbeing. To find out more go to <http://www.wandsworth.gov.uk/wgf>.

Or go to a Meet the Funder meeting at Roehampton Base, Danebury Avenue, SW15 4DQ from 10.30am to 12.30pm on 14 November.